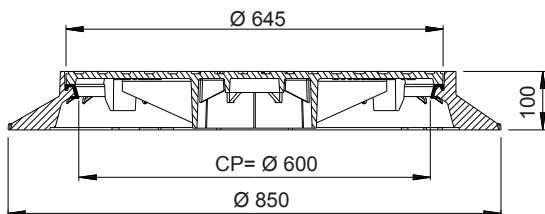
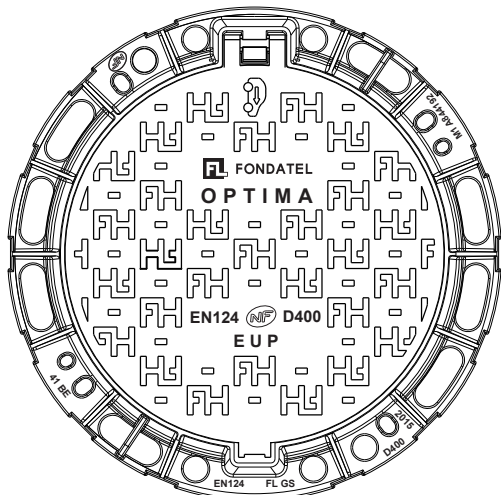
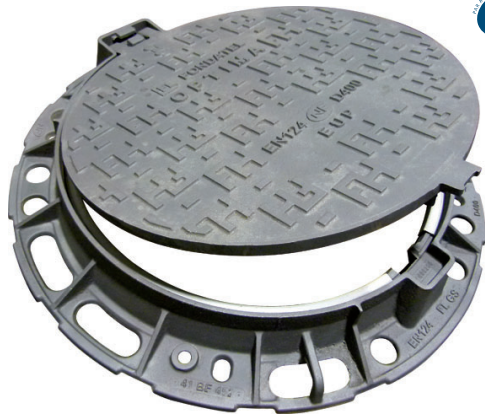


# OPTIMA

## Manhole cover D400



EN 124 by	medium traffic	round frame	hinged	elastomer seal	locking	elastic bar	<b>OPTION</b>

### DESCRIPTION

Manhole cover hinged lockable D400 average traffic.

### ADVANTAGE PRODUCT

#### Efficient articulation

- Opening of the cover at >110° for easy access and for the safety of the operators.
- Cover is removable at a 90°.
- Self-cleaning articulation at the time of opening.

#### Silence and stability

- Polyethylene seal exchangeable clipped in the frame on the zone of support of cover
- Manhole comprising alignment tabs in the frame
- Antiskid design for low noise nuisance

#### Implementation and use

- 2 handling rings on the base of frame.
- Indication of the optimal traffic direction
- Reinforced frame, particularly rigid, with a base of frame little perforated, provide a large supporting surface for an effective sealing.
- 4 holes on the base of frame for a possible pegging.
- Locking by double elastic bar by simple pressure on the cover or vehicle passage.
- Release through leverage by any traditional tools

### MATERIAL

Ductile iron GJS 500-7 depending on EN1563

### COATING

Black water paint non-toxic and non-polluting

### CERTIFICATION THIRD PARTY

Brand name NF-VOIRIE

This brand certify the referential conformity NF-110 thanks to a permanent control exercised by AFNOR CERTIFICATION / 11 Francis de pressense street F-93571 LA PLAINE SAINT DENIS CEDEX and accessible on [www.marque-nf.com](http://www.marque-nf.com)

### PLACE OF INSTALLATION

Group 4, class D400 → see EN124

Intended particularly for secondary roads and parking areas.

### OPTION

Marking/logo on request

REFERENCE	ART.N°	KG	PACK.
OPTIMA - EUP	844190	65	10
OPTIMA - EAUX PLUVIALES	84419013	65	10
OPTIMA - EAUX USEES	84419014	65	10
OPTIMA - EAU POTABLE	84419015	65	10

The validity of this data sheet can be verified on the website of AFNOR (<http://cdn.afnor.org/download/produits/FR/NF110.pdf>)

Sizes in mm - Weights, sizes and sketch are indicative - Uncontrolled distribution.